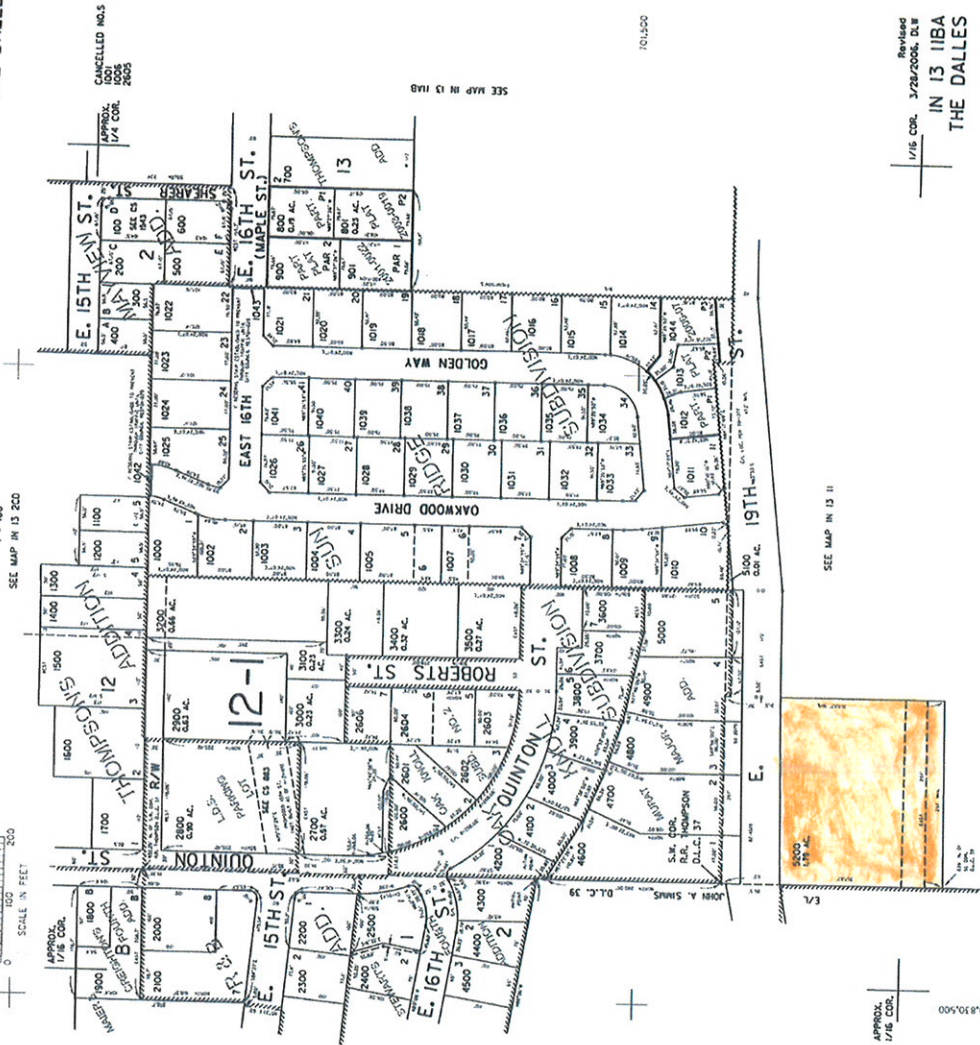


EXHIBIT A

IN 13 IIBA
THE DALLES

NE 1/4 NW 1/4 SEC. 11 T. 1N. R. 13E. W.M.
WASCO COUNTY

THIS MAP WAS PREPARED FOR
ASSESSMENT PURPOSE ONLY



IN 13 IIBA
THE DALLES

APPROX. 1/16 COR.

1011500